

## Heavy Equipment Armor

Protection you can count on!



HEAVY EQUIPMENT  
**ARMOR**  
PROTECTION YOU CAN COUNT ON!

Protect yourself and your assets.

# Protection You Can Count on!

**Heavy Equipment Armor** is the first and only company dedicated to building ballistic window/door, top guard, and cab guard products for **Caterpillar "314E, 315F, & 315NG"** model excavators.



**Caterpillar Excavator  
HEA Ballistic Defender Window,  
Skeleton Screen, and Top Guard**

[www.hearmor.com](http://www.hearmor.com)

208.772.3076

# Excavator Protection

Being safe while in the woods is our core belief at Heavy Equipment Armor. Countless hours working on different job situations have taught us that accidents can occur at any given time! That's why Heavy Equipment Armor decided to create something that could protect operators and large equipment.

## Defender Ballistic Window

Increase Protection with **Ballistic Defender Window** for Caterpillar 314E, 315F & 315NG Excavators

**BE AWARE  
NOT ALL POLYCARBONATE  
IS CREATED EQUAL**



**UL752 Level 1  
Ballistic Window.**



**Bolts directly over  
OEM window.**



**Our polycarbonate  
excavator windows have  
not been drilled or milled  
making it less susceptible  
to micro-fractures and is  
bonded to a steel frame  
making it flex less.**

### Who and What is Heavy Equipment Armor?

Heavy Equipment Armor was founded by the owner of Advanced Forest Equipment, who engineered the first disc mulcher for skid steers. Being a mulching contractor for over 36 years, safety has always been a priority. That's why he started designing custom and bolt-on guarding to protect his operators and machines. Too often injuries happen because a machine isn't equipped to protect the operator for the job, he/she is asked to do. Because of this we have designed several different pieces of enhanced guarding that simply bolt to a machine to help prevent costly injuries and equipment down time. All these pieces are designed with a core principle of safety, function, fit and finish.

### What do we do at Heavy Equipment Armor?

At Heavy Equipment Armor we create enhanced custom and bolt-on guarding for skid steers and excavators. We manufacture steel guarding, UL752 Level 1 rated ballistic guarding, bolt on custom guarding, running boards, light kits, box guards, top guards and rock guards. When it comes to protecting you and your machine, we have you covered!

### What makes Heavy Equipment Armor perfect for Caterpillar owners?

HEA guarding products are designed to work with the original factory bolting locations wherever possible. This includes utilizing factory bolting locations to install additional guarding enhancements. Plus, we believe that your guarding should look as good as it works! We build every piece to complement its new carrier with a fit and finish that looks factory.

### Why should I buy Heavy Equipment Armor for my Skid Steer or Excavator?

Heavy Equipment Armor's guarding products add another layer of safety for the operator and the machine. A company's most valuable asset is protected - **It's people.** This reduces injuries which reduces costs and improves work quality at the same time.

## Specifications Ballistic Defender Window



The new HEA defender ballistic window for excavators, protects operators from flying debris that may be encountered while operating heavy equipment. These innovative windows were designed by contractors who run heavy equipment and have been tested using ballistic standards. Our window is a UL752 rated, level 1 ballistic polycarbonate window. Unlike the OEM window that comes on your machine, these windows can withstand a ballistic attack. They are mounted to the machine using the factory locations on the front of the cab.

Fits Current CAT 314E, 315F, and 315 Next Gen Model Cabs. Step-up the safety on your excavator with a UL752 Level 1 ballistic bolt-on window better known as the Defender Ballistic Window. Whether you are operating a hammer, auger, mower, mulcher, or a log processor you can feel secure in knowing there is a 3/4" bullet resistant door in place, to help protect your **BIGGEST ASSET – YOU!**

The ballistic front window for excavators, are designed with a unique filament. They are bonded to a steel frame and are not milled and drilled. This makes them less susceptible to flex and micro-fractures.

Ballistic excavator windows are currently available for most CAT D, E, F, and Next Gen excavators. The product line is continually expanding to other makes and models of equipment.

\*Bullet resistant does not mean "bullet proof", the Level 1 polycarbonate installed in the Defender Door is rated to withstand a ballistic attack from a 124 grain, 9mm FMJ lead core projectile from 15 feet with a shot spacing of 4 inches. This test is performed in a controlled environment at varying temperatures as low as -26 F and as high as 120 F (outside temperature).

### Saw chain shot

**26.13.4** [1] In this section, "saw chain shot" means one or more parts of a saw chain traveling at a high speed as a result of the saw chain breaking.

[2] This section applies to mobile equipment that is

- (a) used in mechanical falling activities or log processing,
- (b) equipped with a saw that cuts using a saw chain, and
- (c) manufactured on or after May 1, 2019.

[3] Mobile equipment referred to in subsection (2) must meet one of the following requirements:

- (a) the mobile equipment must have protective guards or other devices that prevent the mobile equipment's cab windows from being directly struck by saw chain shot from the mobile equipment's saw chain;
- (b) each cab window that could be directly struck by saw chain shot from the mobile equipment's saw chain must
  - (i) be made of one or more sheets of polycarbonate that have a total thickness of at least 32 mm (1.25in), or
  - (ii) meet or exceed the requirements of the level 1 out door use ballistics tests of ANSI/UL 752, Standard for Bullet Resisting Equipment, 11th edition (with revisions up to and including December 11, 2015).

[4] For the purposes of subsection (3), saw chain shot that ricochets off an object and then strikes a cab window is not considered to have directly struck the cab window.

[en. B.C. Reg. 9/2017, App. N, s. 2.]

**The excerpt on the top was taken from the British Columbia Occupational Health & Safety Regulations, B.C. Reg. 296/97**

British Columbia has some of the strictest regulations when it comes to heavy equipment guarding in North America. The HEA Defender Ballistic Door exceeds these safety regulations.

**Fits current Caterpillar model excavators: 314E, 315F & 315NG**

PLEASE NOTE: This guard is intended as a brush guard only. It is not a certified FOPS/ROPS guard.

# Excavator Protection

At Heavy Equipment Armor, we have made it our job to safeguard operators in all working environments. Whether you are operating a bucket, hammer, auger, mulcher, or a log processor you can feel safe with our excavator forestry guarding. Our forestry guarding for excavators helps protect you and your equipment from flying debris at your job site! Our guarding equipment can be used for more than forestry, anytime any excavator is being used guarding should be used.

## Bolt-on Excavator Screen

Increase Protection with our **Skeleton Window Guard**

**2X2" MESH SCREEN**  
(PART# EWS-FZT)



**Easily mounts to the factory door.**



**No modifications to carrier required.**

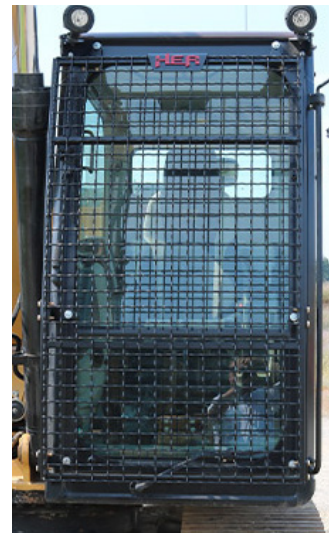


**A great choice for basic cab protection no matter if you are digging or piling slash.**

### Overview

2X2" Mesh screen designed to bolt easily to the front of Caterpillar excavators. Our Front Screens follow the contour of the machine's front windscreen which gives it a sleek profile look.

Made of .120 square tube and 1/4 woven wire. A great choice for basic cab protection no matter if you are digging or piling slash.



**Fits current Caterpillar model excavators:**  
314E, 315F & 315NG

PLEASE NOTE: This guard is intended as a brush guard only. It is not a certified FOPS/ROPS guard.

# Top Cab Guards

Protect your investment by using our top cab guarding on your **Caterpillar Excavators**

**GUARDING FOR TOP OF THE CAB.  
DON'T LET FALLING OBJECTS STOP YOU.**  
(PART# ETCG-FZT, ETCG-NGZT)



Installs easily using CAT factory mounting locations  
(PART# ETCG-FZT, ETCG-NGZT)



Fits Cat C, D, E, F and Next Gen model cabs.  
(PART# ETCG-FZT, ETCG-NGZT)

## CAT Excavator Top Cab Guards Overview:

Heavy Equipment Armor Top Guards provide additional operator protection for standard construction excavator cabs. Heavy Equipment Armor guards are designed to give operators the peace of mind that their cabin is protected from unforeseen impacts that may encounter on challenging construction and forestry job sites. Designed to fit most Caterpillar and Komatsu excavators in the 6-95 ton class excavators. This add-on attachment installs in less than an hour without special tools or modification to the cab. HEA cab guard is available for all appropriate applications and as an option to AFE disc mulchers.

## Features:

- Allows for natural light to show through while protecting the skylight.
- Includes emergency escape hatch to get out quickly. NOTE: Not all machines have a skylight escape hatch.
- Installs easily through the use of factory mounting locations

**Fits current Caterpillar model excavators:**  
314E, 315F & 315NG

PLEASE NOTE: This guard is intended as a brush guard only. It is not a certified FOPS/ROPS guard.

# Excavator Protection

We have made it our priority to safeguard operators in all working environments with our cab enclosure guards and polycarbonate windows for excavators. Whether you are operating a bucket, hammer, auger, mulcher, or a log processor you can feel secure in knowing there is industrial grade guarding on the excavator to help protect you and your assets!

**STANDARD ONE YEAR MANUFACTURER WARRANTY:** The manufacturer warrants this product to be free from defects in workmanship and materials, under normal use and conditions, for a period of one (1) year for the original invoice date. Shipping and handling fees are to be paid for by the customer. The manufacturer agrees, at its option during the warranty period, to repair and defect in material or workmanship or to furnish a repaired or refurbished product of equal value in exchange without charge (except for a fee for shipping, handling, packing, return postage, and insurance which will be incurred by the customer). Such repair or replacement is subject to verification of the defect or malfunction and proof of purchase as confirmed by showing the model number on original dated sales receipt. Heavy Equipment Armor also guarantees its Defender Window/Door edge banded products against de-lamination, irregular surface discoloration, warpage or twisting for a period of one (1) year from the date of purchase. The warranty only covers defects as specified herein and does not include defects or damages attributable to misuse or normal surface weathering, or defects or damages caused by accidents or fire or other casualty or Acts of God, or any other causes or occurrences beyond the manufacturer's control. The exclusive remedial action provided for the customer hereunder shall be repair, restoration, replacement or return and refund of the products manufactured by Heavy Equipment Armor works found to be defective.

## WARRANTY LIMITATIONS

### This warranty does not include:

- Damage resulting from product being stored in areas subject to abnormal heat, ultraviolet rays, cold, dryness, humidity, direct sunlight, fire, collision and foreign any other Acts of God or occurrences beyond the control of Heavy Equipment Armor.
- Damage resulting from extreme moisture (bleaching, etc.), Condensation and moisture formation where condensation is caused by excessive in-house relative humidity or by appliances generating steam vapor.
- Any condition resulting from incorrect or inadequate maintenance or care.
- Damage resulting from misuse, abuse, negligence, accidents, or shipping damage.
- Dissatisfaction due to buyer's remorse.
- Normal wear and tear.
- Damages incurred during transportation.
- Damages incurred during assembly or maintenance.
- Damage because of using cleaning products containing ammonia or acetone.
- Fading or oxidation of finishes due to atmospheric changes and normal weathering.
- Any used, previously displayed items.

Heavy Equipment Armor makes no express warranty or condition whether written or oral and the company expressly disclaims all warranties and conditions not stated in this limited warranty. To the extent allowed by the local law of jurisdictions outside the United States, the Company disclaims all implied warranties or conditions, including any implied warranties of merchantability and fitness for a particular purpose. For all transactions occurring in the United States, any implied warranty of condition of merchantability, satisfactory quality, or fitness for a particular purpose is limited to the duration of the express warranty set forth above. Some states or countries do not allow a limitation on how long an implied warranty lasts or the exclusion of limitation of incidental or consequential damages for consumer products. In such states or countries, some exclusions, or limitations of this limited warranty may not apply to the Purchaser. For consumer transaction, the limited warranty terms contained in this statement, except to the extent lawfully permitted, do not exclude, restrict, or modify but are in addition to the mandatory statutory rights applicable to the sale of this Product to the Purchaser.

### CLAIM PROCEDURES:

- Claims for defective merchandise must be made within ONE year from invoice date.
- Claims for missing parts must be made within 30 calendar days after the merchandise is received.
- Any claim for defective merchandise returns must be packed in original packaging.
- We reserve the right to specify that items be returned to the original warehouse for inspection.
- Pictures are required to claim defective merchandise, along with a copy of the original invoice.
- If the claim is justified, the item(s) or part(s) will be repaired or replaced, or a credit will be issued. It is our policy to replace parts whenever possible.

This warranty gives you specific legal rights. You may have other rights, which vary from state to state.



HEAVY EQUIPMENT  
**ARMOR**  
PROTECTION YOU CAN COUNT ON!

## Our Story:

Heavy Equipment Armor is the first and only company dedicated to building ballistic window/door, top guard, and cab guard products for heavy equipment. Whether your machine is moving dirt with a bucket, lifting materials on the job site, masticating, demolition, or doing a specialized job with an attachment; You can count on Heavy Equipment Armor's UL 752 Rating ballistic window and cab guards protecting your assets! Our enhanced guarding will be there to help protect the operator and the heavy equipment.

Heavy Equipment Armor was created because of the need for additional guarding on heavy machinery like Excavators and Skid Steers. These machines are increasingly being tasked as stand-alone machines because of their ability to carry multiple different tools to get the job done, and they dominate the modern job site.

Our enhanced products like our cab guards for excavators and skid steer armor add another safety protection level for the operator and the machine. A company's most valuable asset is protected – **It's PEOPLE**. This, in turn, reduces injuries which reduce business costs and disruption. Our heavy equipment protection also improves work quality. Insurance claims decrease in safe work environments with Heavy Equipment Armor's enhanced cab guards and ballistic grade UL 752 windows.



### Sales

Telephone: 208.772.3076

E-mail: [sales@hearmor.com](mailto:sales@hearmor.com)

### Headquarters

50287 N Old Hwy 95, Rathdrum, ID 83858

Visit us: [Hearmor.com](http://Hearmor.com)

[www.Hearmor.com](http://www.Hearmor.com)