

Heavy Equipment Armor

Protection you can count on!



HEAVY EQUIPMENT
ARMOR
PROTECTION YOU CAN COUNT ON!

Protect yourself and your assets.

Protection You Can Count on!

Heavy Equipment Armor is the first and only company dedicated to building ballistic window/door, top guard, and cab guard products for **Caterpillar "D3"** model skid steers.



**Caterpillar Skid Steer
HEA Ballistic Defender Door,
Skeleton Screen, and Top Guard**

www.Hearmor.com

208.772.3076

Skid Steer Protection

Being safe while working is a core belief at Heavy Equipment Armor. Countless of hours working on different job sites have taught us that accidents can happen unexpectedly. That's why we decided to make skid steer guarding products that protect operators and equipment.

Defender Ballistic Door

Increase Protection with **Ballistic Defender** for Skid Steer Door Guards

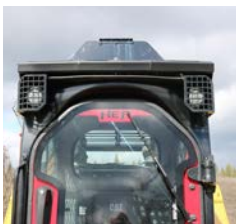
**BE AWARE
NOT ALL POLYCARBONATE
IS CREATED EQUAL**



UL752 Level 1 Ballistic Door.



Uses current factory hardware from your original door.



Our polycarbonate skid steer doors have not been drilled or milled making it less susceptible to micro-fractures and is bonded to a steel frame making it flex less.

Who and What is Heavy Equipment Armor?

Heavy Equipment Armor was founded by the owner of Advanced Forest Equipment, who engineered the first disc mulcher for skid steers. Being a mulching contractor for over 36 years, safety has always been a priority. That's why he started designing custom and bolt-on guarding to protect his operators and machines. Too often injuries happen because a machine isn't equipped to protect the operator for the job, he/she is asked to do. Because of this we have designed several different pieces of enhanced guarding that simply bolt to a machine to help prevent costly injuries and equipment down time. All these pieces are designed with a core principle of safety, function, fit and finish. Our product offerings include guarding for both Caterpillar hydraulic excavators and skid steers.

What do we do at Heavy Equipment Armor?

At Heavy Equipment Armor we create enhanced custom and bolt-on guarding for skid steers and excavators. We manufacture steel guarding, UL752 Level 1 rated ballistic guarding, bolt on custom guarding, running boards, light kits, box guards, top guards and rock guards. When it comes to protecting you and your machine, we have you covered!

What types of guarding are currently offered?

HEA manufactures steel guarding and UL752 Level 1 ballistic guarding for Bobcat, Caterpillar, and Kubota skid steers. Bolt on steel front door guards and cab guards are available for skid steers. HEA manufactures enhanced guarding for both skid steers and excavators.

HEA products are designed to fit each model of machine specifically. Our products are not a universal fit or cookie cutter fit. This allows for the best potential fit. HEA polycarbonate products are made of UL752 Level 1 polycarbonate that can stand a ballistic attack. They are not milled or drilled. Most polycarbonate, offered by other companies are not ballistic rated, they are only impact rated and have been milled and drilled to fit hinges and handles. Milling & drilling polycarbonate leaves it susceptible to micro-fractures.

What makes Heavy Equipment Armor perfect for Caterpillar owners?

HEA guarding products are designed to work with the original factory components wherever possible. This includes utilizing factory bolting locations to install additional guarding enhancements. Plus, we believe that your guarding should look as good as it works! We build every piece to complement its new carrier with a fit and finish that looks factory.

Why should I buy Heavy Equipment Armor for my Skid Steer or Excavator?

Heavy Equipment Armor's guarding products add another safety protection for the operator and the machine. A company's most valuable asset is protected - **It's people**. This reduces injuries which reduces costs and improves work quality at the same time. Being in a safe workplace not only gives you piece of mind.

Specifications Ballistic Defender Door



Step-up the safety on your skid steer with a UL752 Level 1 ballistic door better known as the Defender Ballistic Door. Whether you are operating a hammer, auger, mower, mulcher, or a log processor you can feel secure in knowing there is a 3/4" bullet resistant door in place, to help protect your **BIGGEST ASSET – YOU!**

The Defender Ballistic Door for skid steers has not been drilled or milled making it less susceptible to micro-fractures and is bonded to a steel frame making it flex less. Unlike most skid steer doors that might be rated for heavy impact, the Defender Door is rated to withstand a ballistic attack and is designed to install with your factory door components. No matter the industry your machines may be in, its time to put real protection in place for you and your operators!

The Defender Ballistic Door for skid steer installs easily onto the skid steer using factory hardware from your original door, including gasket, hinges, door lock hardware, and emergency escape system.

*Bullet resistant does not mean "bullet proof", the Level 1 polycarbonate installed in the Defender Door is rated to withstand a ballistic attack from a 124 grain, 9mm FMJ lead core projectile from 15 feet with a shot spacing of 4 inches. This test is performed in a controlled environment at varying temperatures as low as -26 F and as high as 120 F (outside temperature).

Saw chain shot

26.13.4 [1] In this section, "saw chain shot" means one or more parts of a saw chain traveling at a high speed as a result of the saw chain breaking.

[2] This section applies to mobile equipment that is

- (a) used in mechanical falling activities or log processing,
- (b) equipped with a saw that cuts using a saw chain, and
- (c) manufactured on or after May 1, 2019.

[3] Mobile equipment referred to in subsection (2) must meet one of the following requirements:

- (a) the mobile equipment must have protective guards or other devices that prevent the mobile equipment's cab windows from being directly struck by saw chain shot from the mobile equipment's saw chain;
- (b) each cab window that could be directly struck by saw chain shot from the mobile equipment's saw chain must
 - (i) be made of one or more sheets of polycarbonate that have a total thickness of at least 32 mm (1.25in), or
 - (ii) meet or exceed the requirements of the level 1 out door use ballistics tests of ANSI/UL 752, Standard for Bullet Resisting Equipment, 11th edition (with revisions up to and including December 11, 2015).

[4] For the purposes of subsection (3), saw chain shot that ricochets off an object and then strikes a cab window is not considered to have directly struck the cab window.

[en. B.C. Reg. 9/2017, App. N, s. 2.]

The excerpt on the left was taken from the British Columbia Occupational Health & Safety Regulations, B.C. Reg. 296/97

British Columbia has some of the strictest regulations when it comes to heavy equipment guarding in North America. The HEA Defender Ballistic Door exceeds these safety regulations.

Fits current CAT "D3" model skid steers, compact track loaders, and multi terrain loaders:

226D3, 232D3, 236D3, 239D3, 242D3, 246D3, 249D3, 257D3, 258D3, 262D3, 272D3, 272D3 XE, 279D3, 289D3, 299D3, 299D3 XE, 299D3 XE LAND MANAGEMENT

PLEASE NOTE: This guard is intended as a brush guard only. It is not a certified FOPS/ROPS guard.

Skid Steer Protection

We have made it our priority to safeguard operators in all working environments with our cab enclosure guards and polycarbonate doors for skid steers. Whether you are operating a bucket, hammer, auger, mulcher, or a log processor you can feel secure in knowing there is industrial grade guarding on the skid steer cab enclosure to help protect you and your assets!

Skeleton Door Guard

Increase Protection with our **Skeleton Door Guard**



**AVAILABLE IN 2 STYLES:
2.5X5" OR 5X5"**
[PART# CAT-DG2.5 OR CAT-DG5]



Easily mounts to the factory door.



No modifications to carrier required.



Only works with factory Caterpillar polycarbonate door, on the Caterpillar skid steer "D" models.

Fits current CAT "D3" model skid steers, compact track loaders, and multi terrain loaders:

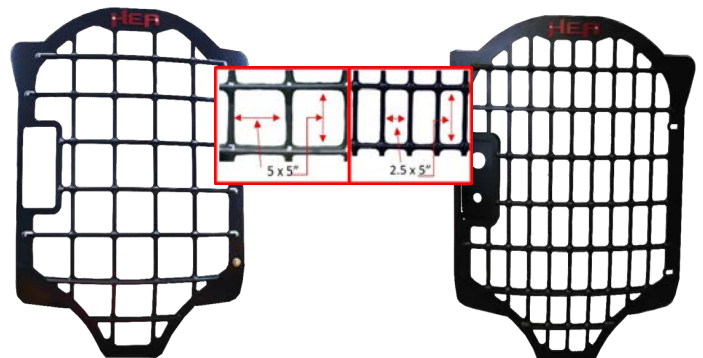
226D3, 232D3, 236D3, 239D3, 242D3, 246D3, 249D3, 257D3, 258D3, 262D3, 272D3, 272D3 XE, 279D3, 289D3, 299D3, 299D3 XE, 299D3 XE LAND MANAGEMENT

CAT Skid Steer Skeleton Door Overview:

There are two different skeleton steel front door guards, the only difference between the two is the screen spacing. They both easily mount up to the factory CAT polycarbonate door, on the CAT Skid Steer "D3" Models. Installation time is approximately 1 hour.

The Skeleton Front Door Guard for CAT skid steers installs easily onto the skid steer using factory hardware from your original door, including hinges, lock system and emergency escape system. Integrated push bumper system spreads weight of door over cab, keeping weight off the hinges.

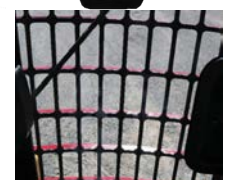
SKELETON FRONT DOOR GUARD fits most "D3" model skid steers. Be safe knowing you have added protection to your front poly-carbonate door.



View From Inside Looking Out



Figure 1



View From Inside Looking Out

PLEASE NOTE: This guard is intended as a brush guard only. It is not a certified FOPS/ROPS guard.

Top Cab Guards

Protect your investment by using our top cab guarding on your **Caterpillar Skid Steer**

**GUARDING FOR TOP OF THE CAB.
DON'T LET FALLING OBJECTS STOP YOU.**
[PART# CATD-GC]



CAT Skid Steer Top Cab Guard System
PART# CATD-CG
(Shown with Caterpillar Cooler)



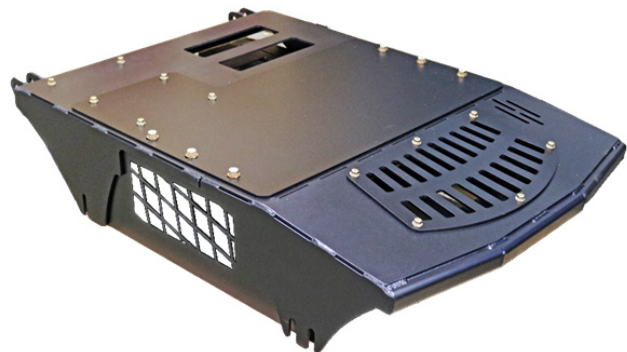
CAT Skid Steer Top Cab Guard System
PART# CATD-CG
(Shown with Caterpillar Cooler)



CAT Skid Steer Top Cab Guard System
PART# CATD-CG
(Shown without Caterpillar Cooler)

CAT Skid Steer Top Cab Guards Overview:

- Includes guarding for top of the cab.
- Works on skid steers with auxiliary hydraulic cooler OR without auxiliary hydraulic cooler.
- Allows easy access for under cab maintenance.
- No modifications to the carrier are required during installation process.
- Simple bolt on system with hose routing.
- Approximate installation time; 2 hours.
- Includes all necessary hardware and complete instructions.
- For "D3" model CAT skid steers.



Fits current CAT "D3" model skid steers, compact track loaders, and multi terrain loaders:

226D3, 232D3, 236D3, 239D3, 242D3, 246D3, 249D3, 257D3, 258D3, 262D3, 272D3, 272D3 XE, 279D3, 289D3, 299D3, 299D3 XE, 299D3 XE LAND MANAGEMENT

**Top Cab Guard for Skid Steer Cab
PART# CATD-CG**

PLEASE NOTE: This guard is intended as a brush guard only. It is not a certified FOPS/ROPS guard.

Skid Steer Protection

Safety is our primary concern for all those that operate Skid steers, view our collection of skid steer guarding products which include ballistic grade protection doors and enhanced cab guarding.

Enhanced Guarding

Guard your cab and motor area with our **Enhanced Guarding**

**AVAILABLE IN 2
STYLES:
SHORT AND LONG**
(PART# CATD-EG OR CATD2-EG)



Protects your top cab and motor area.



Works with or without the auxiliary hydraulic cooler.



Takes about 2 hours to install.

Fits current CAT "D3" model skid steers, compact track loaders, and multi terrain loaders:

226D3, 232D3, 236D3, 239D3, 242D3, 246D3, 249D3, 257D3, 258D3, 262D3, 272D3, 272D3 XE, 279D3, 289D3, 299D3, 299D3 XE, 299D3 XE LAND MANAGEMENT

We offer complete fabrication of enhanced guard packages to guard and protect your employees and your machine. This enhanced guarding can be used on newer CAT Skid Steer "D3" models. Enhanced cab guards do not interfere with the tilting capacities of the cab for servicing of the machine. Comes with all the necessary hardware and complete instructions.

Whether your machine will be moving dirt and rock with a bucket, lifting materials on a job site, mulching or doing a specialized job with an attachment, our enhanced skid steer guarding will be there to help protect the operator and the skid steer.

Overview

- Includes guarding for top of the cab and motor area.
- Works on skid steers with auxiliary hydraulic cooler OR without auxiliary hydraulic cooler.
- Allows easy access for under cab maintenance.
- No modifications to the carrier are required during installation process.
- Simple bolt on system with easy hose routing.
- Approximate installation time; 2 hours.
- Includes all necessary hardware and complete instructions.
- For "D3" model CAT skid steers.

PLEASE NOTE: This guard is intended as a brush guard only. It is not a certified FOPS/ROPS guard.

Available in 2 styles: Short Version and Long Version

**Enhanced CAT Skid Steer Guarding System
PART #CATD-EG (SHORT)**



This system will fit current CAT skid steer models 226D3, 232D3, 236D3, 239D3, 242D3, 246D3, 249D3, 257D3, 258D3, with side mount.

**Enhanced CAT Skid Steer Guarding System
PART #CATD2-EG (Long)**



This system will fit current CAT skid steer models 262D3, 272D3, 272D3 XE 279D3, 289D3, 299D3, 299D3 XE, 299D3 XE Land Management

PLEASE NOTE: This guard is intended as a brush guard only. It is not a certified FOPS/ROPS guard.

Skid Steer Protection

Safety is our primary concern for all those that operate Skid steers, view our collection of skid steer guarding products which include ballistic grade protection doors and enhanced cab guarding.

Rock Guards

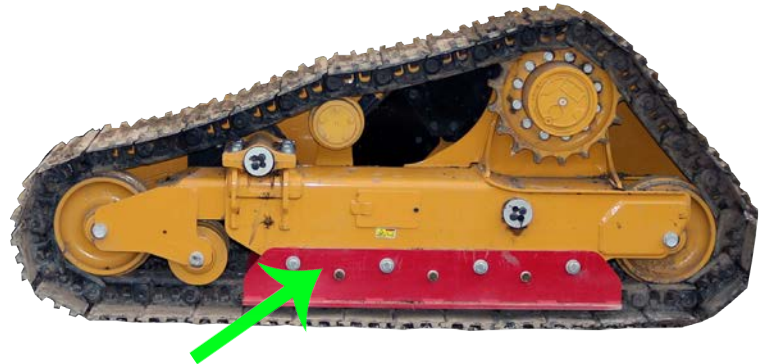
Our **Rock Guards** helps prevent steel tracks from coming off!

**ONLY AVAILABLE
FOR D3
STEEL TRACK MODELS**
(PART# CATD3-RG)



- This product is designed to work on **CAT299D3 XHP steel track machines ONLY.**
- Helps prevent debris from getting into the track system.
- No modifications to skid steer required.
- Easy installation through factory mounting locations.
- Gain stability in steep or uneven terrain.
- Rock guards come with heavy duty bolts and spacers.

PART# CATD3-RG



Helps prevent tracks from coming off! & Extends the life of your undercarriage!

PLEASE NOTE: This guard is intended as a brush guard only. It is not a certified FOPS/ROPS guard.



STANDARD ONE YEAR MANUFACTURER WARRANTY: The manufacturer warrants this product to be free from defects in workmanship and materials, under normal use and conditions, for a period of one (1) year for the original invoice date. Shipping and handling fees are to be paid for by the customer. The manufacturer agrees, at its option during the warranty period, to repair and defect in material or workmanship or to furnish a repaired or refurbished product of equal value in exchange without charge (except for a fee for shipping, handling, packing, return postage, and insurance which will be incurred by the customer). Such repair or replacement is subject to verification of the defect or malfunction and proof of purchase as confirmed by showing the model number on original dated sales receipt. Heavy Equipment Armor also guarantees its Defender Window/Door edge banded products against de-lamination, irregular surface discoloration, warpage or twisting for a period of one (1) year from the date of purchase. The warranty only covers defects as specified herein and does not include defects or damages attributable to misuse or normal surface weathering, or defects or damages caused by accidents or fire or other casualty or Acts of God, or any other causes or occurrences beyond the manufacturer's control. The exclusive remedial action provided for the customer hereunder shall be repair, restoration, replacement or return and refund of the products manufactured by Heavy Equipment Armor works found to be defective.

WARRANTY LIMITATIONS

This warranty does not include:

- Damage resulting from product being stored in areas subject to abnormal heat, ultraviolet rays, cold, dryness, humidity, direct sunlight, fire, collision and foreign any other Acts of God or occurrences beyond the control of Heavy Equipment Armor.
- Damage resulting from extreme moisture (bleaching, etc.), Condensation and moisture formation where condensation is caused by excessive in-house relative humidity or by appliances generating steam vapor.
- Any condition resulting from incorrect or inadequate maintenance or care.
- Damage resulting from misuse, abuse, negligence, accidents, or shipping damage.
- Dissatisfaction due to buyer's remorse.
- Normal wear and tear.
- Damages incurred during transportation.
- Damages incurred during assembly or maintenance.
- Damage because of using cleaning products containing ammonia or acetone.
- Fading or oxidation of finishes due to atmospheric changes and normal weathering.
- Any used, previously displayed items.

Heavy Equipment Armor makes no express warranty or condition whether written or oral and the company expressly disclaims all warranties and conditions not stated in this limited warranty. To the extent allowed by the local law of jurisdictions outside the United States, the Company disclaims all implied warranties or conditions, including any implied warranties of merchantability and fitness for a particular purpose. For all transactions occurring in the United States, any implied warranty of condition of merchantability, satisfactory quality, or fitness for a particular purpose is limited to the duration of the express warranty set forth above. Some states or countries do not allow a limitation on how long an implied warranty lasts or the exclusion of limitation of incidental or consequential damages for consumer products. In such states or countries, some exclusions, or limitations of this limited warranty may not apply to the Purchaser. For consumer transaction, the limited warranty terms contained in this statement, except to the extent lawfully permitted, do not exclude, restrict, or modify but are in addition to the mandatory statutory rights applicable to the sale of this Product to the Purchaser.

CLAIM PROCEDURES:

- Claims for defective merchandise must be made within ONE year from invoice date.
- Claims for missing parts must be made within 30 calendar days after the merchandise is received.
- Any claim for defective merchandise returns must be packed in original packaging.
- We reserve the right to specify that items be returned to the original warehouse for inspection.
- Pictures are required to claim defective merchandise, along with a copy of the original invoice.
- If the claim is justified, the item(s) or part(s) will be repaired or replaced, or a credit will be issued. It is our policy to replace parts whenever possible.

This warranty gives you specific legal rights. You may have other rights, which vary from state to state.



**HEAVY EQUIPMENT
ARMOR**
PROTECTION YOU CAN COUNT ON!

Our Story:

Heavy Equipment Armor is the first and only company dedicated to building ballistic window/door, top guard, and cab guard products for heavy equipment. Whether your machine is moving dirt with a bucket, lifting materials on the job site, masticating, demolition, or doing a specialized job with an attachment; You can count on Heavy Equipment Armor's UL 752 Rating ballistic window and cab guards protecting your assets! Our enhanced guarding will be there to help protect the operator and the heavy equipment.

Heavy Equipment Armor was created because of the need for additional guarding on heavy machinery like Excavators and Skid Steers. These machines are increasingly being tasked as stand-alone machines because of their ability to carry multiple different tools to get the job done, and they dominate the modern job site.

Our enhanced products like our cab guards for excavators and skid steer armor add another safety protection level for the operator and the machine. A company's most valuable asset is protected – **It's PEOPLE**. This, in turn, reduces injuries which reduce business costs and disruption. Our heavy equipment protection also improves work quality. Insurance claims decrease in safe work environments with Heavy Equipment Armor's enhanced cab guards and ballistic grade UL 752 windows.



Sales

Telephone: 208.772.3076

E-mail: sales@hearmor.com

Headquarters

50287 N Old Hwy 95, Rathdrum, ID 83858

Visit us: [Hearmor.com](http://hearmor.com)

www.Hearmor.com